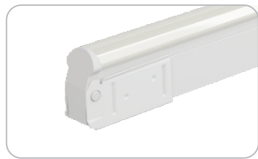
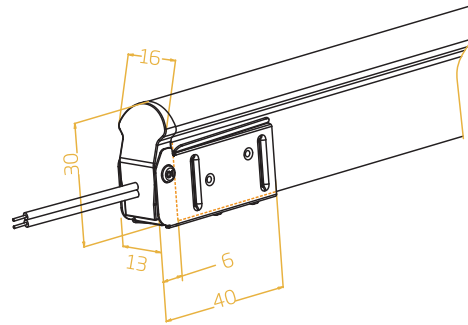


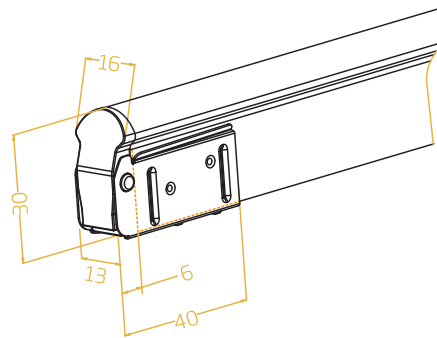
Swivel Front Connector



FXN - 1129 - C - SW - F



FXN - 1129 - C - SW - EC



Note:

1. Unless otherwise stated, the tolerance of the connector is $\pm 0.5\text{mm}$;
2. To avoid damage from the excessive force on cable joint, please keep at least 60mm of cable ahead in the natural state.